

4XFORUM

Several Wildfires Currently Burning in Montana

There are several wildfires currently burning in Montana.

The Moose Meadow Fire in Beaverhead-Deerlodge National Forest started Thursday, July 25, approx. 18 miles southwest of Philipsburg.

The Mill Creek fire also started Thursday, July 25, near Frenchtown. It was sparked by

a lawn mower.

The Gold Creek fire is burning in Lolo National Forest. It started July 15 by lightning. It is located 16 miles northeast of Missoula.

The Red Shale fire is by the Beartop Lookout in Lewis and Clark National Forest. It was spotted July 18, and believed to have been started by lightning.

The West Mullan Fire is in Lolo National Forest, about 4

miles west of Superior. This human caused fire began July 14.

The Emigrant Fire was caused by lightning, and was spotted on July 21. This fire is south of Livingston in Paradise Valley.

The Gold Pan fire was caused by Lightning on July 16, and is burning out of Sula, in the Frank Church River of No Return Wilderness.

The Copper City fire is in Helena National Forest, and the Black Bear Fire in Lolo National Forest are 100% contained.

There are several trail closures because of these fires, check current information before heading out to these areas. To keep track of wildfires, visit the www.inciweb.org/state/27/ website for complete information.

Fire Danger

As posted on their websites



- Bitterroot National Forest
- Lolo National Forest



- Beaverhead-Deerlodge NF
- Custer National Forest
- Flathead National Forest
- Gallatin National Forest
- Helena National Forest
- Kootenai National Forest
- Lewis and Clark NF

Visit the following website for the most current map: www.wfas.net/index.php/fire-danger-rating-fire-potential--danger-32. These are all subject to change. See page 10 for a re-run of the fire rating system.

Calendar	2
Don Harden Obituary & Rimrock	3
Magic City, Big Sky, & Continental	4
Frontier	5
Skyliners, Mountaineers ...	6
News Releases	7-10
★ Meeting Minutes.....	11-13
Websites/Facebook	13

What Fire Restrictions Mean to You

What do posted Stage 1 and Stage II fire restrictions mean to you?

Under Stage 1 Fire Restrictions, no fires are allowed, unless specific exemptions are posted. No smoking is allowed, unless within an enclosed vehicle, building, developed recreation site or area 3 ft. in diameter cleared of all flammable materials.

Under Stage II Fire Restrictions no campfire or other fires are allowed. No exemptions. No smoking is allowed, unless within an enclosed vehicle,

building, developed recreation site or area 3 ft. in diameter cleared of all flammable materials. No operating any internal combustion engine, welding, or operating acetylene or other torch with open flame, and no using of explosives between 1 pm. and 1 am. A one our foot patrol in the work area is required following cessation of all activities. No operating motorized vehicles off designated roads and trails.

Violators may be fined up to \$5,000 individually or \$10,000 or an organization and impris-

oned up to 6 months. The violator(s) may also be held liable for all suppression costs and damages.

If Stage II restrictions are not effective in reducing the number of human-caused fires, or there is potential loss of life due to explosive fire conditions, closure of the area may be necessary.

As conditions continue to dry out, new restrictions may be implemented at any time. It is recommended to check current conditions every time you head out on the trail.

West Central MT Under Stage 1 Restrictions Aug. 1

Missoula, Mont.—Stage I fire restrictions will go into effect first thing (12:01 AM) on campfires and smoking. High temperatures, forecasts of dry thunderstorms, very low humidity, and the general lack of rainfall persist across the area. There are several large fires burning in the area that should serve as a reminder to all residents and visitors to the area that everyone needs to be extremely careful when engaging in activities that could start a wildfire.

Specifically, at Stage I, campfires are prohibited unless they

are in a designated campsite, which will be distinctively listed by the appropriate land management agency and will be distributed to the public when the orders go into effect. In addition to the campfire restrictions, smoking is prohibited unless within an enclosed vehicle, building, or in an area 3 feet in diameter, that is barren or cleared of all flammable materials.

These restrictions apply to any lands outside of designated city limits, regardless of ownership. The restrictions will remain in effect until there is a significant long-term change in

fire danger.

More details will follow as individual agencies draft their orders.

Some areas included in this order are in Silver Bow, Powell, Missoula, Ravalli, Mineral, Granite, and Deer Lodge Counties. Also the Flathead Indian Reservation, and several Wildlife Refuges and Wilderness areas.

For more information regarding wildland fire safety, campfires, and fire restrictions on Montana's forested lands in West Central Montana, please visit www.firerestrictions.us

2013 M4x4A Event Dates

Please include contact information and phone numbers for any event added.

All dates and times subject to change. Contact the hosting organization if you have questions.

August 2 — Morrison Jeep Trail run (yes Friday - a fellow wheeler' from North Dakota will be in the area), meeting at Laurel IGA at 7 am., leaving shortly after. Some will continue on to Cooke City, others may want to camp overnight, stay tuned to MC4W's facebook page for more information

August 10 — Rimrock 4x4 Pre-run for Jeep Jamboree, Big Horn Mountains

Aug. 17 — Skyliners having a Float Trip on the River

August 18 — Big Sky 4-Wheelers Powder Puff Run

August 24 — Mountaineers Trail/Top Truck Challenges, at the Gallatin County Fairgrounds, visit their website (*NOTE CHANGE OF DATE FROM AUG. 10*)

August 29-31 — Rimrock 4x4 Inc. host Jeep Jamboree, Dayton, WY, in Big Horn Mountains

October 12 — M4x4A Delegates Meeting, 10 am., Bozeman, location TBA, trail ride follows

Club Contact Info

Region 1 - RVP Vern Ball

Magic City 4x4

PO Box 21241, Billings, MT
59104, mc4w.com — Meet
first Monday of each month,
6:30 pm., at El Corral Restau-
rant, 4907 Southgate Drive,
Billings

Rimrock 4x4

PO Box 361, Billings, MT
59103
Meet third Wednesday of each
month, 7:30 pm., at the Rod
and Gun Club, on Saddleback
Trail, Billings

Region 4 - RVP

Region 5 - RVP Alex Tyhurst

Frontier 4-Wheelers

PO Box 7701
Helena, MT 59604
www.m4x4a.org/frontier
Meet first Wednesday of each
month, 7 pm., in the meeting
room at The Staggering Ox
Restaurant, 400 Euclid Ave.,
in Helena

Region 7 - RVP Jim Young

Continental 4 Wheel

Drive Association

Meets last Monday of each
month, 7 pm., at Legion Oasis
Recreation Hall, 2400 Hill
Ave., Butte.

Region 6 - RVP

Mountaineers

PO Box 951,
Bozeman, MT 59718,
bozemanmountaineers.org
Meet second Wednesday of
each month, 7:30 pm.,
Korner Klub in 4-Corners,
8191 Huffine Ln., Bozeman

Region 8 - RVP Dick Riebe

Region 9 - RVP Nancy Hines

Big Sky 4-Wheelers

Meet first Monday of each
month, 7 pm., at the old
Lasalle School, on the corner
of Pioneer Road and Helena
Flats, Kalispell

Skyliners 4 Wheel Drive Club

PO Box 1416, Polson, MT
59860, skyliners4x4.com
Meets first Tuesday of each
month, 7 pm., at the VFW in
Polson, at 423 Main St.

Non-M4x4A Club Event Dates (all dates are subject to change)

August 3 — Montana Off Road Extreme Racing event, short course race, racing starts 12 noon, on Story Road (take I-90 exit 443, turn south to South Frontage Road, east to Wise Lane, then east to Story Road), Billings, MT, for more information contact Jeff MacGill 850-8028 or 252-7317 (non M4x4A club event)

August 3-4 — Five Valley Off Roaders Sand Drags and Obstacle Course, behind Muralt's Travel Plaza, Missoula, MT

August 17 — Montana Off Road Extreme Racing event, short course race, racing starts 12 noon, on Story Road (take I-90 exit 443, turn south to South Frontage Road, east to Wise Lane, then east to Story Road), Billings, MT, for more information contact Jeff MacGill 850-8028 or 252-7317 (non M4x4A club event)

August 18 — Montana Off Road Extreme Racing event, Mud Drags, racing starts 12 noon, on Story Road (take I-90 exit 443, turn south to South Frontage Road, east to Wise Lane, then east to Story Road), Billings, MT, for more information contact Jeff MacGill 850-8028 or 252-7317 (non M4x4A club event)

August 24-25 — Sun River Sand Drags and Mud Bog, Sun River, MT

September 14 — Montana Off Road Extreme Racing event, short course race, racing starts 12 noon, on Story Road (take I-90 exit 443, turn south to South Frontage Road, east to Wise Lane, then east to Story Road), Billings, MT, for more information contact Jeff MacGill 850-8028 or 252-7317 (non M4x4A club event)

September 21 — Montana Off Road Extreme Racing event, Mud Bog, racing starts 12 noon, on Story Road (take I-90 exit 443, turn south to South Frontage Road, east to Wise Lane, then east to Story Road), Billings, MT, for more information contact Jeff MacGill 850-8028 or 252-7317 (non M4x4A club event)

September 28 — Yellowstone Off Road Racing Baja, Wild West, Columbus, MT, Call Don 406-670-4647

September 28 — Fall Crawl at Big Boy Motorsports Park, entry \$25, spectators \$8 (12 and under free), benefits Choteau County Cancer Support Group, Vaughn, MT, 406-660-0760

October 5 — Montana Off Road Extreme Racing event, short course race, racing starts 12 noon, on Story Road (take I-90 MT, for more information contact Jeff MacGill 850-8028 or 252-7317 (non M4x4A club event)

Conservation Projects Need To Be Advertised

Clubs must give thirty days advance notice for conservation projects to earn a patch! Send your project information to the M4x4A Secretary - email spidycats@q.com, with 30 days advance notice so she can get information about your project sent to members, and so it will qualify as a State or Regional conservation project! Regional Conservation projects are those done by one club. State Conservation Projects are those done by two or more clubs.

Following your conservation projects, you must send a report to the M4X4A Secretary. It should include: When and Where, who participated (please state what club the member belongs to). Include what was done during the project. You can send photos too! Some projects will not qualify as a conservation project, such as, highway cleanup projects or other civic duty projects, such as park cleanups.

Montana 4x4 Association Board of Directors Contact Information

President, Destry Walker
1122 Cruiser Lane, Apt. E
Belgrade, MT 59714
des4x4@gmail.com
406-240-0401

**Vice President,
Richard Hiltz**
3601 Casper Dr.
East Helena, MT 59635
C2tsales@mtnet.net
406-202-6038

Secretary, Stacey Osborne
4Xforum Content
500 Lois Place
Laurel, MT 59044
spidycats@q.com
406-628-8974

Treasurer, Dawn Hines
8803 Hofferber Road
Shepherd, MT 59079
dawn@redlinebillings.com

**Director-at-Large (Past
President), Tom Mandera**
140 Susan Court
Helena, MT 59602
tsm1@tmcom.com
406-458-6580

We have lost a good friend and fellow four-wheeler. Our hearts go out to Sherry Harden, and their families.

Don Harden

Don Harden, 73, of Billings, passed away Monday, July 22, 2013, of congestive heart failure.

Donald Leroy Harden was born Nov. 7, 1939, in Roundup to Gladys and Willard Harden. He attended school in Sumatra and Broadview and graduated from Lavina High in 1957 "fourth in his class." He attended Eastern Montana College and then went into the carpentry field, in later years starting a company with his co-partner Andy Andersen.



Don married Mary Popelka, and from this union two daughters were born. In 1980 he married his grade school sweetheart, Sherry Helmey.

Don and Sherry enjoyed many, many times Jeeping, snowmobiling and hunting. Don was an avid 4-wheeling enthusiast and their 4-wheeling travels took them to several states, making many lifelong friends. They were members of the Rimrock 4x4 Club and lifetime members of the Montana 4x4 Association. Since retirement, Don and Sherry spent summers riding their ATVs and camping in Don's favorite spot at Whitetail campground in the Little Belt Mountains while enjoying an occasional "Checkerboard fix."

Don was preceded in death by parents Gladys and Lloyd Larson and Gen and Willard Harden; in-laws Nick and Grace Schaff and Euel Feeler; and stepson Brian Helmey.

He is survived by Sherry, his loving wife of 32 years; daughters Debbie Harden and Donna Delaware; son-in-law Frank Delaware; stepson Brett (Mira) Helmey; grandchildren Rocky, Summer (Scott) Schoer, Justin (Monica), Cody and Haley; great-grandchildren Kaiden and Braxton, Tavian and Tierney, Stryker and Scotlynd, with another baby due in the fall; sisters Carol (Gene) Hansen, Doris (Gene) Van Dyke; brother Jim (Irene) Larson; sister-in-law Darlene (Paul) Pavlak; aunt Georgia (Walt) Yager; numerous nieces, nephews and cousins; and his faithful companions Choco and Tyke.

Cremation has taken place. A graveside service will be held at Lavina Cemetery on Saturday, Aug. 3, at 11 a.m. with a reception lunch to follow at the Cozy Corner Bar in Lavina. Memorials may be sent to the charity of one's choice.

Don's family would like to thank the staff at Valley Health Care, Sapphire Suites for their wonderful care of Don.

Arrangements are by Cremation & Funeral Gallery. Condolences may be sent to the family at www.cfgbillings.com through "Our Families."

Like seeing your club in this newsletter? Send in reports, photos, events by the 25th of the month for next months newsletter. I encourage clubs to appoint a club member to be your "club reporter." Also - if you know of something happening in your National Forest that members should know about, please share! Send them to Stacey Osborne, Secretary, spidycats@q.com



When posting on Facebook, for everyone to see it and share it, it **must be made public**. You'll find an audience selector tool where you share status updates, photos, and more.



Gene Anderson and Aaron Andrews, left. Marge Anderson picking flowers, right. A group played around at Burgess Junction, in the Big Horn Mountains over the 4th of July weekend.

Photos from Rimrock Facebook page, posted by Brooke & Aaron Andrews

Rimrockers Play in the Bighorns

The Rimrock 4x4 club with the Jeep Jamboree August 29-31. played in the Bighorn Mountains in July. They will take part



Some members of Rimrock 4x4 and Magic City on a run in the Big Horn Mountains in July.

Photo from Rimrock Facebook page, posted by Jeremy Hauge

DJR Engraving

Dick Riebe

Name Tags • Badges Trophies • Awards

Call or e-mail for more information and cost

4026 Sunrose Dr., Missoula, MT 59804

djrengraving@q.com

406-549-3842



Vern Ball transformed his Nissan Patrol into a locomotive for the Laurel 4th of July parade. The theme was "Let Freedom Ring," and Magic City won the award for best theme.

Photo courtesy of Stacey Osborne

Magic City 4x4 Is Keeping Busy!

The Magic City 4-Wheelers won the award for Best Theme in the Laurel 4th of July Parade. The Theme was "Let Freedom Ring," and the club decorated the lead rig as a locomotive towing a 6 ft. bell. The parade had a total of 90 entries. The crowd cheered when Max Graham stopped and his son climbed up on his tire.

On July 7, a group of Magic

City 4-Wheelers caravanned to the south end of the Pryors to make a run up Sikes Ridge. They started from the Wyoming side.

A Morrison Jeep Trail run has been planned to accommodate an out-of-state guest on Friday, Aug. 2. They'll meet at Laurel IGA at 7 am.

Magic City's next meeting will be Monday, August 5.



Members of Magic City make their way up Sikes Ridge, from the Wyoming Side, on July 7.

Photo courtesy of William Shipp



The Big Sky 4-Wheelers had 20 rigs on their Father's Day Campout on Saturday, June 15, and 16 rigs on Sunday.

Photo courtesy of the BS4W July Newsletter

Big Sky 4-Wheelers Work on Trail Sign Project

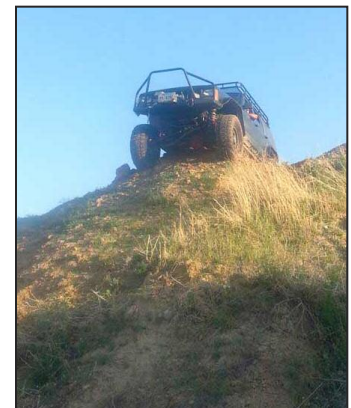
The Big Sky 4-Wheelers announced the winner of the winch raffle - their new member Lindsey Burlingham. They sold a total of 84 tickets.

Club member Jeff Carlson will be fabricating trail rating signs out of aluminum. Four

ratings will be used: circle = easy, square = intermediate, diamond = hard, and scull/ cross-bones = most difficult.

The club will have a Powder Puff Run on August 18.

Their next meeting will be August 5, at 7 pm..



In July, members of the Continental Four Wheel Drive Association played on a race site they are helping to develop.

Photo courtesy of Continental facebook page





Frontier 4 Wheelers (a 4x4 club)

PO Box 7011

Helena MT 59604

At Frontier we are trying to make the most of our short summer so we get out a lot. We had a trip planned with another club for the 29th of June but the other club changed their plans. So a number of us went to Rock Creek (leadville) anyway. We had a great time as always.

July 3rd we had our monthly club meeting with 15 people in attendance. We had a new guest present and were pleased to have Don Gordon join us for the meeting for the first time in a while. He is looking great and healing quickly.



On July 4th some club members enjoyed a trip to the Skyline Mine above Elkhorn. This is not a particularly tough trail but it has some tremendous views from an overlook just below the top of the trail. We spent a good amount of time trying to get some great photos of our rigs up on the overlook. A little lunch and back to the bottom for a relaxing day of wheeling.



On the 6th a small group of Frontier members did a trip to Carruthers Lake as a pre-run for our club run to there scheduled for the 27th of July. With the great beauty of this trail it is sometimes too easy to forget that this is a

serious wheeling trail with some great obstacles. We met some wheelers up there who knew us through our FB page and posts on M4x4A.



On July 14th we had an official club run to McKelvey Lake (North Meadow Road). Six rigs would make this trip up past McKelvey to Cliff Lake. Mike Kelly would join us for this trip and do amazing things with his Bronco based tube buggy. It has been a little while since Mike joined us so we



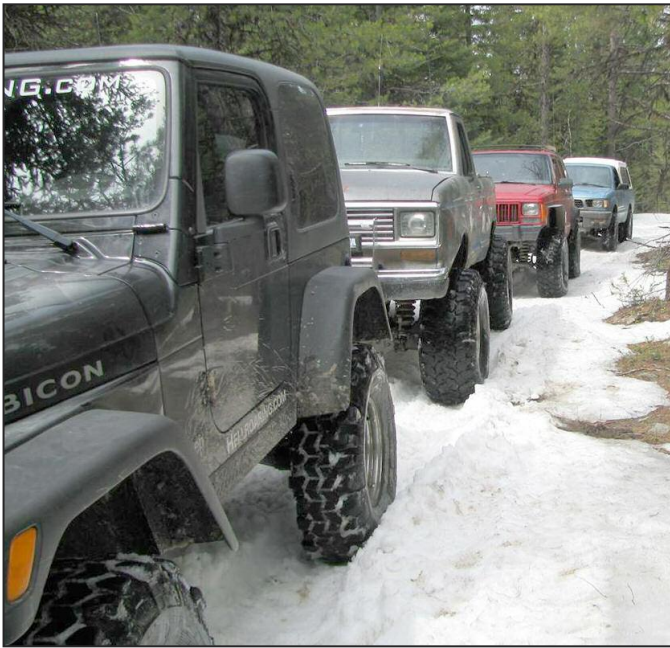
were very happy to have him along. We had two drivers who had never done this trail before and is always a little fun to watch and to help them through these substantial obstacles. I have heard it said that this is the toughest trail in Montana and while I can't really comment to that, I can tell you it is the toughest trail I have done and there are no by-passes on McKelvey. This is not a scary trail like Morrison but this one will make you work harder to get

your rig through in one piece than any I have driven in this state without a rollover concern. The rocks are large and plentiful on this trail.

Everyone scraped, bumped or slid something across a rock or two on this trail. I highly suggest rock-rails, sliders or what ever you want to call your rocker protection when doing this trail. You will be glad you have them. I think we may manage another trip up this trail later this year.



Keep an eye out for our August club runs. We will try again to schedule both a Saturday and a Sunday ride to give all our members a chance to participate. Keep an eye out on our Facebook page for event scheduling. Stay safe and keep on wheeling!!!



The Skyliners found snow in July on the Wild Bill, which has a lot of fun obstacles.

Photo courtesy Skyliner's Facebook



Blair Howze cheers a mud racer to keep pushing forward!

Photo courtesy Mountaineer Facebook Page

Mountaineer Mud Bog Has Record Number of Racers

The Mountaineers had another successful mud bog on July 20. They had 122 mud bog entries, which took them 9 hours, rather than their usual 7 hours.

The Bozeman Mountaineers would like to give a special shout out to Dave Gould for doing an amazing job planning and running this year's mud bog!

We'd also like to thank Mike Jongeling, Blair Howze, and Tim Kleppen for their many

years of service to our organization and all of their help EVERY year at the Mud Bog.

The mud bog couldn't happen without you guys. Thank you!

The Mountaineers will next entertain with a Trail and Top Truck Challenge on August 24 at the Gallatin County Fairgrounds. The event will have two classes, divided by tire size. See the ad below for more information.

Bozeman Mountaineers Trail & Top Truck Challenges



August 24th
@ Gallatin County Fairgrounds

The Top/Trail Truck is going to have two classes this year. They are divided by tire size:

- ✓ 36" & Under (Trail Class): Will have milder obstacle. Daily drivers are OKAY for this class.
- ✓ 37" & Up (Top Truck Class): Will have difficult obstacles. Daily drivers are NOT OKAY for this class as there is a high chance of breakage.

If anyone needs more information about the Top/Trail Truck they can contact Dave or Mike at Mike's Off Road, Bozeman. Their phone number is (406) 586-4103. Mike will be running the event with Dave's help.

OHV Program Recreation Grants Deadline August 2

The Off-Highway Vehicle (OHV) Program grant applications must be submitted by August 2, at 4 pm.

The OHV grant program provides grant funding for safety and ethics education as well as projects that enhance

and maintain OHV recreational opportunities for enthusiasts.

The projects can include: maintenance of existing OHV trails, signs, ethics education, noxious weed control, safety and mapping efforts, and related projects.

The OHV grant program has moved to a online application process. All grant applicants must register as a user and submit their 2014 grant applications online at fundingmt.org. Paper OHV grant applications will no longer be accepted.

Montana State Parks administers the OHV program with funds appropriated by the state legislature. Visit the website at stateparks.mt.gov/recreation/ohvGrants.html

High Fire Danger in the Bitterroot National Forest

Hamilton, MT - Fire danger on the Bitterroot National Forest has been moved from Moderate to High as a result of the much warmer and dryer weather in the past few weeks. The Forest has received some recent lightning with only marginal rain showers.

To date, fire crews have responded to 2 human-caused fires and 3 lightning-caused fires. All fires have been extinguished except for the most recent lightning caused fire, the Took Ridge Fire, north of Painted Rocks Lake. The Took

Ridge Fire was detected this past Tuesday evening around 6:30 p.m. by Lookout Mountain Lookout on the West Fork Ranger District. Two fire engines responded to the fire the first night. Wednesday, additional crews were sent and two helicopters provided extra support and water to the fire. The fire is presently contained at 1.5 acres and 15 firefighters continue working to put it out.

Fire prevention personnel have found several abandoned campfires on their patrols over the past few weeks. With the in-

creased fire danger, the public is cautioned to make sure that if they build a campfire while enjoying the Forest, to please make sure their fire is dead out before leaving.

Here are some guidelines to follow when you're ready to put out your fire:

- Allow the wood to burn completely to ash, if possible
- Pour lots of water on the fire; drown ALL embers, not just the red ones
- Pour until hissing sound stops
- Stir the campfire ashes and embers with a shovel

- Scrape the sticks and logs to remove any embers
- Stir and make sure everything is wet and they are cold to the touch

If you do not have water, use dirt. Mix enough dirt or sand with the embers. Continue adding and stirring until all material is cool. Remember: do NOT bury the fire as the fire will continue to smolder and could catch roots on fire that will eventually get to the surface and start a wildfire.

July 12, 2013

Public Asked to Heighten Fire Safety as Fuels Dry Out

KALISPELL, MONT. – Fire danger on the Flathead National Forest and public lands in the Flathead valley is now at "high". When the fire danger is "high", fires can start easily from most causes and small fuels (such as grasses and needles) will ignite readily. Unattended campfires and brush fires are likely to escape. Fires will spread easily, with some areas of high-intensity burning on slopes or concentrated fuels. Fires can become serious and difficult to control unless they are put out while they are still small.

The latest human-caused fire on the Flathead National Forest

was detected Monday, July 22, 2013 in the Bob Marshall Wilderness at an area known as Independence Park. It appears the fire started from a campfire that was not properly extinguished. The fire is about one acre in size and resources are providing initial attack. There have already been more than a dozen human-caused fire starts on the Flathead National Forest. Forest Service Law Enforcement Officers are investigating these fires. There are stiff fines and the possibility of jail time for being careless with your campfires, cigarettes and other ignition sources.

Human-caused wildfires can

have devastating impacts unnecessarily destroying our natural resources, putting the public and our firefighters in danger, destroying homes and habitat, and costing taxpayers millions every year. Nationwide, more than 75,000 wildfires are reported each year. About nine out of ten fires are caused by people. July 23, 2013 marks the 10 year anniversary of the start of a human caused fire named the Robert Fire in the North Fork area. The fire burned 57,570 acres of National Forest and National Park land. The fire cost taxpayers nearly 31 million dollars. As Smokey Bear reminds us, only you can

prevent this from happening.

We ask that all forest users be extra careful to fully extinguish any campfire or cooking fire.

- Never leave a campfire unattended, and be sure it is "dead out" before leaving the area.
- Have a bucket and shovel handy when having a campfire.
- Cigarette smokers should smoke on bare ground or soil (not in or near vegetation) and pack out their cigarette butts.
- Fireworks are prohibited in all national forests, national parks, state lands, and all private land the state identifies as classified forest land.

July 24, 2013

Fish, Wildlife & Parks Advises Beware of Fire Danger

As summer temperatures heat up, Montana Fish, Wildlife & Parks reminds everyone who plans to be outdoors to be aware that fire danger is also on the rise.

FWP urges everyone to be cautious when building and extinguishing camp fires and to be prepared to prevent wild fires. FWP suggests that everyone:

- Carry a shovel, bucket, and

axe in vehicles.

- Restrict camping activities to designated camping areas and build campfires only in established fire rings.
- Drive only on established

roads. Take care to ensure that catalytic converters and mufflers are in good repair.

- Do not stop or park vehicles over tall grass or brush.

July 17, 2013

Myers Leaving the Beaverhead-Deerlodge NF

Change is in the wind for the Beaverhead Deerlodge National Forest as Supervisor Dave Myers is leaving Montana to become the Forest Supervisor of the Shasta Trinity National Forest in Redding California beginning July 29. "I've really

enjoyed my time in SW Montana as well as working with all the great people throughout the area," said Myers. "Dillon has been a wonderful community to live in and everyone is friendly and very welcoming."

The Forest Service has begun

outreaching to fill behind Myers. In the meantime Tim Garcia will be temporarily filling in behind Myers until the new Forest Supervisor arrives. Garcia currently works in legislative affairs in the Forest Service's Washington D.C. office,

but has come up through the ranks of the Forest Service as a district ranger on the Wasatch-Cache NF in Utah, and has also worked for the State of Utah as their Deputy State Forester. Garcia will take over the reins in mid-August. *July 12, 2013*

Grizzly Bear Trapping Begins in Gallatin NF, Heed Warnings

BOZEMAN – As part of ongoing efforts required under the Endangered Species Act to monitor the population of grizzly bears in the Yellowstone Ecosystem, the USGS in conjunction with Montana Department of Fish, Wildlife, and Parks is working to inform the public that pre-baiting and scientific trapping operations will begin soon within the Taylor Fork Drainage of the Gallatin National Forest, Montana. Biologists, with the Interagency

Grizzly Bear Study Team (IGBST), will begin work in the Taylor Fork beginning July 16th and will continue through August 15th. Trapping operations can include a variety of activities, but all areas where work is being conducted will have major access points marked with warning signs. It is critical that all members of the public heed these signs.

Monitoring of grizzly bear distribution and other activities are vital to ongoing recovery of

grizzlies in the Yellowstone Ecosystem. In order to attract bears, biologists utilize natural food sources such as fresh road-killed deer and elk. Potential trapping sites are baited with these natural foods and if indications are that grizzly bears are in the area, traps will be used to capture the bears. Once trapped, the bears are handled in accordance with strict protocols developed by the IGBST.

Whenever bear trapping activities are being conducted for

scientific purposes, the area around the site will be posted with bright warning signs to inform the public of the activities occurring. These signs are posted along the major access points to the trapping site. It is important that the public heed these signs and do not venture into an area that has been posted. For more information regarding grizzly bear trapping efforts call 406-994-6675.

July 15, 2013

Logging Traffic Alert in the North Fork of the Big Hole

Logging operations and log truck traffic will begin this week and run weekdays through September 30 in the Pintler Creek drainage and along Forest Roads #185 and #1278. Recreationists seeking to access

the Anaconda-Pintler wilderness via the trailhead above Pintler Lake or via the Mystic Lake portal are urged to watch for truck traffic on the lower North Fork road, and along Highway 43 on the Wisdom

Ranger District.

If you are travelling in that area during the work week, expect to encounter minor delays due to logging operations, as roadside hazard trees are being removed to enhance public

safety.

Contact the Wisdom Ranger District at 689-3243 for traffic updates and drive safely and defensively on all Forest roads this summer.

July 8, 2013

Helena Orders Temporary Closure on Rimini Banner Creek Rd.

The Helena National Forest has issued Order No. H-13-16. For the purpose of this order it is prohibited to operate any type of motor vehicle from July 15 through October 15, 2013, excluding Saturdays and Sundays, and holidays on Rimini Banner

Creek Road 1876, south of the town of Rimini in Section 9 until its junction with the east entrance road of the former Basin Creek mine site in Section 30, T8N, R5W

The periods for travel restriction are 7 am.-7 pm. Local traf-

fic for residents will be provided by the mine waste removal contractor through flaggers, pilot car or both.

The reason for this closure is to provide for visitor safety during mine waste hauling by contractors for the EPA. Mine

waste is being hauled by large trucks from the town of Rimini south on Rimini road 695 (county road) to the junction of the Banner Creek Road 1876 and then south on Road 1876 to the junction of the Basin Creek Mine area access. *July 11, 2013*

Helena Ranger District Temporarily Closes Banner Creek Road

HELENA, MONT., July 22, 2013 - The Helena Ranger District will temporarily close Banner Creek Road (Forest Service Road #1876) in the Tenmile area to provide for industrial traffic associated with mine waste clean-up activities being

conducted by contractors of the Environmental Protection Agency.

The temporary road closure will be in-place Monday through Friday from 7:00 a.m. to 7:00 p.m. starting immediately until October 15, 2013.

The reason for the daytime closure is to provide for public safety during hauling of mine waste materials. Local traffic will be accommodated through pilot cars and signs will be posted at closure points. Roads will be open during weekends

and holidays.

Mine waste is being hauled by large trucks from Rimini to the Luttrell Regional Mine Waste Repository at the Basin Creek mine site on the divide between Tenmile and Basin Creek watersheds. *July 22, 2013*

New Firewood Cutting Area Announced in Bitterroot National Forest

Hamilton, MT. – The Bitterroot National Forest is opening a new firewood cutting area near Sula. Forest Road #5615 is in the Laird Creek drainage area. This road and area replaces road #5728 (Lord Draw)

which was mentioned in a news release last week. The new area offers safer road conditions and better access to firewood.

This is the fourth year that the Forest has opened designated areas in an effort to pro-

vide more accessible firewood. The 2013 firewood cutting areas will be open until August 18th. As with wood cutting elsewhere on the Forest, no trees are to be felled onto the roadway and all slash must be

piled. Law enforcement will be monitoring the roads.

To purchase a firewood permit, learn more about each area, and receive a map of the locations visit any Bitterroot National Forest office.

Collaborative Effort Nets Millions for Flathead Co. Projects

KALISPELL, MONT - Partnering efforts between Flathead County, the Montana Department of Transportation and several Federal Agencies has resulted in federal funding for four road improvement projects in Flathead County. The federal, state and local collaboration in each of these efforts was a significant factor in the successful evaluation of the proposals.

Flathead County Commissioner Pam Holmquist said, "Flathead County is excited to receive this funding to improve our road system providing public access to the recreational lands around the County. We have appreciated the collaborative efforts with our State and Federal partners and look forward to the completion of construction."

Each of the teams developed and coordinated support for several different road improvement projects in Flathead County as part of several different national programs in the

current Highway bill. As a result four projects were recently announced in either the Federal Lands Access or Federal Lands Transportation Programs for improvements on Flathead County roads.

- The Hungry Horse West Project was awarded 3.3 million dollars. This project will replace the Highway 2 Bridge over the South Fork of the Flathead River as part of a larger \$15 million project. The project includes a shared-use path and address safety and other issues along the bridge approaches.

- The Blacktail Road Project was awarded 1.1 million dollars for 1.75 miles of surface improvements starting from the current end of pavement.

- The Blacktail Road Project was also awarded 300,000 dollars for planning and design to address safety and resource impacts on the remainder of Blacktail road through the end of the road at Blacktail ski area. This road also serves

numerous other functions including access to private lands, communications sites, winter and summer use trails, timber haul and if necessary fire-fighting.

- The Pleasant Valley Road Relocation Project was awarded 2.9 million dollars for relocating out of a wetland area about four miles of the Pleasant Valley road that bisects the Lost Trail National Wildlife Refuge. Other funding for this project will also address long standing stream restoration and fish passage improvements for Pleasant Valley Creek.

The legislation Congress passed providing these funds currently authorizes the program for fiscal years 2013 and 2014. Funding beyond 2014 is dependent on reauthorization of the programs by the US Congress.

There are also matching funds requirements being addressed on each project. The next step in the process is for

the Western Federal Lands Highway Division to develop funding agreements with state and local agency partners. Just as with the proposal process, it is anticipated that each of these projects will involve a unique partnering between the organizations during the implementation phases. The projects are slated for construction between 2014 and 2017.

Federal agencies involved include Flathead National Forest, Glacier National Park, U.S. Fish and Wildlife Service, and the Western Federal Lands Transportation Division of the Federal Highway Administration. State and local agencies include Montana Department of Transportation and Flathead County. This collaboration leverages the strengths of each organization to efficiently and economically address improvements to the public's transportation needs.

Flood-Damaged Road Near Gardiner Temporarily Closed

As a result of damage from heavy rains and flooding last Wednesday, July 17, the Gallatin National Forest has temporarily closed Cedar Creek Road (Forest Road 617), ten miles north of Gardiner, Mont.

Damage includes deep cuts and ruts in the roadway that are not easily passable, places

where the road has sloughed off the side of the hill, and extensive property damage to private land owners. Forest engineers and road crew members are currently evaluating the short and long-term work needed to provide a safe and passable roadway.

Cedar Creek Road leads to a

trailhead that accesses the historic "OTO Ranch." Instability in the area, the potential for additional damage from use, and public safety are concerns the Forest will address before reopening the road.

"We thank everyone for allowing the homeowners and the Forest employees time and

space to make repairs," said Acting District Ranger David Cernicek. "The Forest reminds the public to plan ahead for weather events that might keep them out longer than planned, and to always leave an itinerary with friends or family with directions of what to do should something happen." *July 22, 2013*

Kootenai NF Orders Temporary Closure of Graves Creek/Vermilion Creek Road for Road Repairs, Culvert Replacement

Graves Creek -Vermilion Creek Road # 367 will be closed at mile post 22, 1/2 mile up from the Willow Creek and Vermilion Road junction, & at

mile post 16.8 coming from Graves Creek side, 6.5 miles from Vermilion Pass.

The Forest Service will be performing major road repairs &

culvert replacements. Period of closure will be from July 15 through August 31, 2013. For questions please contact the Cabinet Ranger District @

(406) 827-3533. Office hours are M-F 7:30 a.m. to 4:00 p.m.

July 2, 2013

Judge Rules in Favor of Beaverhead-Deerlodge National Forest

A federal judge ruled in favor of the U.S. Forest Service Monday in a lawsuit filed by Beaverhead County commissioners concerning access to 322,000 acres in the Beaverhead-Deerlodge National Forest.

The suit contended that the Forest Service's 2009 revised

forest plan unfairly restricted access to motorized recreation vehicles in newly recommended wilderness areas by failing to consult with the plaintiffs and by not conducting a proper environmental analysis.

In his summary judgment, U.S. District Judge Sam Had-don dismissed two of the plain-

tiffs' claims and found in favor of the defendants on three others.

Two groups, the Greater Yellowstone Coalition and the Montana Wilderness Association, intervened and argued in defense of the Forest Service plan.

The plaintiffs were Beaver-

head County Commissioners Tom Rice and Mike McGinley, along with many individuals and organizations interested in access to wilderness. Those individuals and organizations included snowmobile and off-road vehicle groups, ranchers and mining organizations.

July 23, 2013, Billings Gazette

Temporary Road Closures on the Flathead National Forest

KALISPELL, MONT. — There are two temporary road closures on the Flathead National Forest. There will be access or alternative routes on all three projects. Please use extra caution when approaching or moving through work areas.

- The Spotted Bear Ranger District is starting work on Monday, July 15, on the Willow Creek culvert replacement. The project is located past Meadow

Creek Trailhead on the NFSR #549 (Gorge Creek Road). During the project, users may encounter short delays or reduced speeds. Access remains open to both the Gorge Creek and Bunk Creek Trailheads. Please contact the Spotted Bear Ranger Station for additional information, 758-5376.

- The Swan Lake Ranger District is temporarily closing National Forest System Road

(NFSR) #9507 Lower Bond Creek from the junction of NFSR #9507 and # 9514 to its end. This closure is to provide safety during the Six Mile Fuels Stewardship harvesting (logging) activities. The gate will close at 1:00 PM on July 19, 2013 and may reopen by mid-September. The trailhead for the Bond Lake Trail across the highway from the Swan Guard Station is still open which pro-

vides access to the trail. There will be periodic harvesting activity adjacent to the trail and users are asked to use caution. Please contact the Swan Lake Ranger Station for additional information, 837-7500.

For more information on the Flathead National Forest please visit: www.fs.usda.gov/flathead.
July 15, 2013

FWP Restricts Fishing to Coolest Part of the Day

In an effort to protect fish from the stress of low stream flows and high water temperatures, Montana Fish, Wildlife & Parks will prohibit fishing from 2p.m. until midnight on parts of the Clark Fork and all of the Bitterroot Rivers, excluding the East and West Forks, beginning Thursday, July 25.

The waters affected by the 2p.m.-midnight closure on the Clark Fork include the stretch from Perkins Lane Bridge near Warm Springs downstream to

Flint Creek and then from the Clark Fork-Bitterroot confluence just west of Missoula downstream to the Flathead River. On the Bitterroot, fishing is prohibited from 2p.m.-midnight on the entire length of the river, excluding the East and West Forks.

Water temperatures on the affected streams have exceeded FWP criteria for temporary fishing restrictions, a tool used to help reduce the impact on drought-stressed fish.

Pat Saffel, FWP Region 2 Fisheries Manager says that drought-like conditions, which often occur in Montana in late July and August, can stress wild trout and other fish. Prolonged high water temperatures and lower oxygen levels can lead to fish kills that can affect fish numbers in future years.

"We're monitoring temperatures on other western Montana rivers and will implement further restrictions if necessary," Saffel says. "Anglers on all

rivers can reduce fish stress by fishing only during the morning and early afternoon periods when water temperatures are at their coolest."

Other river restrictions are in place in other parts of the state. Anglers can check for details on fishing restrictions or closures on the FWP home page at fwp.mt.gov. Select Drought & Fire under the Hot Topics heading, or check the FWP online fishing guide.

How To Interpret Fire Danger Rating System

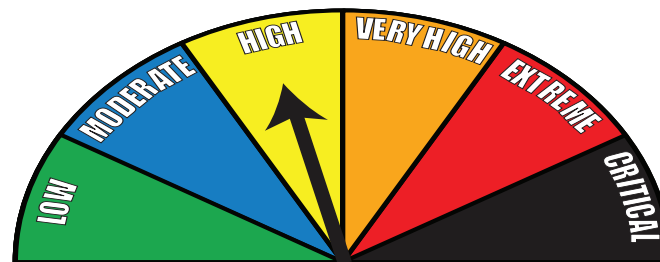
As the summer is beginning to heat up, the forest service fire danger sign arrows will begin to bounce around! Following is how they determines the current forest conditions:



LOW — Fuels do not ignite readily from small firebrands although a more intense heat source, such as lightning, may start fires in duff or punky wood. Fires in open cured grasslands may burn freely a few hours after rain, but timber fires spread slowly by creeping or smoldering, and burn in irregular fingers. There is little danger of spotting.



MODERATE — Fires can start from most accidental causes, but with the exception of lightning fires in some areas, the



number of starts is generally low. Fires in open cured grasslands will burn briskly and spread rapidly on windy days. Timber fires spread slowly to moderately fast. The average fire is of moderate intensity, although heavy concentrations of fuel, especially draped fuel, may burn hot. Short-distance spotting may occur, but is not persistent. Fires are not likely to become serious and control is relatively easy.



HIGH — All fine dead fuels ignite readily and fires start easily from most causes. Unattended

brush and campfires are likely to escape. Fires spread rapidly and short-distance spotting is common. High-intensity burning may develop on slopes or in concentrations of fine fuels. Fires may become serious and their control difficult unless they are attacked successfully while small.



VERY HIGH — Fires start easily from all causes and, immediately after ignition, spread rapidly and increase quickly in intensity. Spot fires are a constant danger. Fires

burning in light fuels may quickly develop high intensity characteristics such as long-distance spotting and fire whirlwinds when they burn into heavier fuels.



EXTREME — Fires start quickly, spread furiously, and burn intensely. All fires are potentially serious. Development into high intensity burning will usually be faster and occur from smaller fires than in the very high danger class. Direct attack is rarely possible and may be dangerous except immediately after ignition. Fires that develop headway in heavy slash or in conifer stands may be unmanageable while the extreme burning condition lasts. Under these conditions the only effective and safe control action is on the flanks until the weather changes or the fuel supply lessens.

July 2013 Delegate Meeting Minutes

July 21, 2013
Best Western GranTree
Bozeman, Montana
Delegates Meeting
Montana 4x4 Association

The July 21, 2013 delegates meeting was called to order at 10:20 am. by Destry Walker, president. There were 10 members and one guest present.

The Pledge of Allegiance was recited.

Our guest is Stephen Baynes, who moved to Mammoth, Yellowstone Park from Tennessee. He was very involved with the Southern Four Wheel Drive Association, in about 4 clubs. He's always looking for somewhere to wheel on weekends, and has been in contact with several clubs.

Dawn Hines passed around her Treasurers report. Dawn reported that dues for the Blue Ribbon Coalition were due, and asked if we wanted to renew them. Richard Hiltz discussed that he thought they do good for our cause. Roger Osborne made a motion to pay \$200 to Blue Ribbon Coalition for dues, Tom Mandera seconded, and the motion passed. Roger Osborne made a motion to accept the Treasurers report, Blair Howze seconded, and the motion passed. Vern Ball asked how much money was made on convention. Dawn Hines replied that convention lost about \$800 because there was no pre-paid registration, and about 40 members who signed up to attend, didn't show up, and hadn't paid, so we had to pay for those meals. And, we only charged half price for children, but the state had to pay full price for their meals. There was also no coffee, and it had to be asked for, then we were charged \$98 for the coffee, but the Bozeman club is fighting that charge and will send that to M4x4A if we are reimbursed. It was asked if we were paying for the delegates meeting room, and Destry replied about \$125. Richard Hiltz suggested looking elsewhere in the future if meetings are in Bozeman. Destry stated that it was a learning curve for their member who put it all to-

gether, and in the future things would be done differently.

President's report — Destry Walker reported that he talked to Willie Worthy with Montana Backroads, and there was no change as far as them staying with M4x4A, he'll discuss it later.

Vice President's Report — Richard Hiltz reported that there is a loosely formed new club in Dillon, mostly made up of former members of the Continental club. They recently asked to see Frontier's bylaws so they can create their own. They have been going on rides with Frontier. Richard hopes that in the future they may join M4x4A.

Director-at-Large — Tom Mandera reported that he got Frontier's award from convention delivered. He's been busy, and missed the United meeting by a week.

Regional Vice Presidents Reports

Region 1 — Vern Ball reported that Magic City participated in the Laurel 4th of July Parade. Their theme was Let Freedom Ring, and their lead vehicle was decorated like a train locomotive and the trailer it towed held a 6 ft. Bell on it, and the club won the award for Best Theme. They got lots of cheers and exposure. They will be doing the Morrison Jeep Trail on Friday, Aug. 2, anyone is welcome to join them, and they'll meet at the IGA in Laurel at 7 am. Rimrock is doing the work for the Big Horn Mountains Jeep Jamboree Aug. 29-31. They had planned a pre-run over the long weekend after July 4th, but that fell apart and a group just went up and ran trails in the area. Magic City may also have a Benbow trail run to Benbow coming up.

Region 5 — Richard Hiltz reported that Frontier has been very active, though their membership numbers have dropped. Some of their older non-active members have pulled back. It's tough getting members to pay dues. Don Gordon attended their last meeting and is healing and looking good since his accident. They have new folks at nearly

every meeting. On a recent Tizer run they had 16 rigs, and had a parade to the trail. They did McKelvey trail last weekend. They try to do two trail rides per month, one on Saturday and one on Sunday. Some members will be camping out at Race Track next weekend. The current members they have are all active.

Richard Hiltz questioned how the Rainbow family could bring 7000 people into the National Forest with no permit, and they were allowed. Plus the Forest Service was going to have to spend nearly 1 million dollars for cleanup and such, and it also cost the county. Tom Mandera replied that a gathering of less than 25 is no threat, 25-300 is a threat, but 7000 is no problem, we just need trail riders in the 1000s. Richard Hiltz was furious that the Forest Service gives us a fit for being responsible; rules only apply if you're honest.

Destry Walker asked if the club sent a card to Don Gordon after his accident, Stacey Osborne replied that she didn't think so, but will. Richard Hiltz reported that Don will be retiring and not be rebuilding his shop.

Region 6 — Mountaineer Blair Howze reported that they had 122 mud bog entries, but got a little off their usual pace and the event took them 9 hours instead of their usual 7 hours. This year they partnered with the fairgrounds, and all the club had to do was run the mud bog. The fair did potties, concessions, advertising, etc. This was their best year for non-whining racers too. Had some good, fast runs. Their upcoming Trail/Top Truck event will be in August, but the date is up in the air because of a fairgrounds conflict, look for the date to be announced. Their June Truck Pull wasn't great for spectators because of the weather, but they had some great pulls. They are looking into doing a Fall Truck Pull, but will need \$3000 in sponsorship to pay for the pull sled cost. The club hasn't been doing much trail riding. A week ago they went on a Friday night run to

Storm Castle, which has great views. Their membership numbers are staying consistent, and had a lot of great help at their mud bog. Blair discussed an experience he had on a trail he's used for years, and last winter when it was covered with snow he nearly tipped his rig over discovering that the trail was cut in half for small-wheel base users — it was covered in snow so he didn't see it, and there was no signs warning of the change. He believes the Forest Service has only one agenda, to close motorized out!

Discussion continued on Administrative Access, the 1872 Mining Law, and RS2477. Our guest, Stephen Baynes, discussed what happened to Southern Four Wheel Drive Association with Tellico being closed. The closure ultimately was because of Trout Unlimited.

Blair Howze continued with a discussion on Bear Canyon, which isn't a long trail, but during certain times of the year it could be challenging. The Forest Service tore up the road without notice. Now, Gallatin County is suing the Forest Service because the county should have a right-of-way up to the Forest Service boundary, and the road had been open for decades. He's surprised, but glad to see the County stepping up and going to court over the closure. Richard Hiltz stated that the same thing is happening in Jefferson County. A road was temporarily closed for culvert replacement, but the Forest Service managed to "permanently" delay the work, closing a road for years. The County helped get that road opened back up.

Region 7 — Richard Hiltz reported that the Continental Four Wheel Drive Association would not be having a mud bog this year. They are concentrating on some private land south of Butte to create a recreation area for a possible obstacle course. This has been taking up some of their time, so they haven't been trail riding.

Region 8 — absent. Destry Walker talked with Willie Wor-

Continued on page 12

Minutes Continued

thy and his club didn't understand the M4x4A infrastructure or the website. So they didn't see why they should stay with M4x4A. Destry discussed that he would like to find out what each club needs from M4x4A to help their clubs... from trails to racing to membership.

Vern Ball stated that it helps to see what is working, and what isn't working with other clubs, as well as what other clubs are doing. Websites are becoming static, and facebook is "where it is at." M4x4A's website doesn't seem to be used, but could be used for communications. It helps to see activity.

Destry added that if we can't answer the question of what M4x4A does, then we fail.

Richard said he gets the 4XForum put on the M4x4A facebook pages. It would be nice if clubs post something on their facebook pages to share it. Most people don't realize that in order

to share information, photos, etc., the person who posted it needs to make it public first, and then share it with M4x4A's facebook page. It has to be made public to share it.

Our guest, Stephen, said it was the photos of trail rides that drew his attention to Frontier, who is very active on facebook. He can see what kind of rigs are on the trail and if it's his kind of trail.

Richard added that it also would help if clubs pay attention to their facebook sites. He suggested keeping the "sales ads" to a minimum and not post any carnage photos.

Region 9 — absent. Dawn Hines reported for Nancy that the Skyliners are now on facebook, which has increased their participation. They also participated in the 4th of July Parade. Big Sky 4-Wheelers sent a thank you for the donation made at convention for their Black Tail conservation project.

Vern Ball said it would be

nice if the state association pushed and supported trail rides. Tom Mander said he saw that Cascade went up the Middlefork; it would have been nice to know earlier to join them.

Blair Howze stated that he originally got involved for the racing, and then later on got into wheeling. There is more comradery among members with events. Unfortunately, racing is gone, so he suggested each club pick a month and host a weekend M4x4A trail event. The state could help facilitate the event. Tom Mander said Frontier's Fun Day was a good event for that. Richard questioned if members would travel to support those events. Vern thought that Magic City would do an event, put on the meal. Our guest, Stephen, stated that for someone like him, if you offer a 2-3 day weekend of trail riding, he's there, especially if it's offered at different places. You need to expose the activities. Blair added that though he probably couldn't attend every "event," he'd make a few.

Destry Walker thought if we did our quarterly meetings at different locations, followed by a trail ride that would be nice. Tom Mander stated that it is a great idea; it's been done, and didn't work. Most meeting goers tend to bring their econo rigs to the meeting. Vern Ball added that maybe we'd get more people if a meeting wasn't just a meeting. It also would help to plan far enough in advance so plans can be made. Tom Mander reminded everyone that this was discussed at the last meeting. Divide Ride not only brought in money, but also comradery.

Destry Walker stated that facebook is awesome for clubs to communicate, but our website could be used to tie everything together. Provide information, calendar, clubs would have their own pages all in one location. Tom Mander said that the information is already there, no one utilizes it. Currently only Magic City, Mountaineers and Skyliners seem to have current websites. Vern said Magic City's website hasn't been updated in a long time, they use facebook. Destry will form a committee with Tom Mander and Richard Hiltz to work on the website.

Vern mentioned that it would be nice to link the website to facebook.

Richard Hiltz encouraged members to "like" things and share them — just remember that they need to be made public to share them.

Committee Reports

Land and Legislation — Vern Ball said that Region 1 had letter writing meetings to write to the BLM on their travel plan. They had some success and involvement. We need to use the right verbiage when writing, like stating that we need more high profile access. They don't realize what we do, and what kind of trails we're interested in. Richard Hiltz added that in the future, any clubs doing letter writing could share it on facebook so everyone can know about it and help. Destry Walker said to also post sample letters, so members know where to start. Michelle Ball said she learned that we need to be more specific with where and why. We need to let them know we want high clearance, unmaintained trails, we don't need any resources or improvements. A suggestion is to make the first obstacle on the trail so only a vehicle with high profile clearance can get past — like the do for motorcycles when the beginning of the trail is fenced off for a narrow vehicle. Richard Hiltz said that the Forest Services recognizes the need for easy and hard walking trails, but they don't realize our need for trails for high profile vehicles. They don't realize what we do and what our needs and capabilities are. Tom Mander added that once the forest ranger begins to understand, they either retire or get transferred.

Blair Howze said not only to we need to prove to them what we do, but what we don't do. He gave an example of a rig that rolled on a forest service trail. The Forest Service couldn't see how it could be recovered without causing damage to the area. They gave the Mountaineers an opportunity to recover the rig. They did it environmental correctly, placed a tarp under the rig so no fluids or broken glass would be an issue. They were able to get it to an area that was

**ONE LESS SPARK
ONE LESS
wildfire**

Safe Towing
Dragging chains will throw sparks. Never substitute parts when towing. Only use appropriate safety pins & hitch ball.

Nothing Dragging
Make sure your vehicle is properly maintained, with nothing dragging on the ground.

Be Wheel Safe
Check tire pressure. Driving on an exposed wheel rim throws sparks.

Only You Can Prevent Wildfires. CARRY A FIRE EXTINGUISHER IN YOUR VEHICLE AND LEARN HOW TO USE IT.

Produced in cooperation with the USDA Forest Service, which is an equal opportunity service provider and employer. Photography by Forest Service. M4x4A, Hiltz and Vern Hiltz. 405-491-0300 June 2012

Continued on page 13

Minutes Continued

easily accessible to be hauled to town. That action changed that forest service personnel's outlook. We need to make an effort to work with the forest service, especially their younger members, even if they get transferred away, they'll remember what we taught them. We need to break their indoctrination they get in college. If we teach new forest service personnel regularly, it seeds new areas as they're moved around.

Vern Ball stated that this is why it is important to belong to the association, to learn from one another.

Destry Walker asked Treasurer Dawn Hines what other organizations we belong to or donate to, other than Blue Ribbon. A discussion was held and others mentioned we belonged to United, and having made donations to Citizens for Balanced

Use (CBU), Families for Outdoor Recreation (FFOR), and Treasure State Resource Industry Alliance (formerly WETA).

Destry Walker asked about Tread Lightly. Both Vern and Tom discussed having experiences with them where they weren't real excited about what we do. Tom also told him about United's 4WD Awareness Program and Volunteer Trail Patrol that we have chose to support.

United Dues were discussed. Some members present thought we had decided not to renew our dues, everyone else thought we had. Tom explained to Destry that we have been a member from the beginning with our full membership. Blair Howze made a motion to pay our United Dues and to continue to support United Four Wheel Drive Associations, Tom Manderla seconded, and the motion passed.

Vern Ball discussed a bylaw

change we might consider for next year since we no longer have the Divide Ride income. The Billings Drag Racers Association made a change that they can't make any donation for more than they will take in over a two-year period. He said he'd look into the wording and put something together for next year.

Vern Ball asked if Cascade had been contacted about their membership status. Destry said he's tried to make contact with Mark Blom, but knows he's busy. Both Vern and Richard stated that they'd like to be involved with a meeting if one is made.

Destry would like to see our funding go to help build our clubs and support clubs. Vern agreed that it would be a way for us to see the benefits.

The 4Xforum was discussed, and Destry and Richard suggested making it a full newsletter

quarterly, and then just monthly reminders between publications. They thought that it was taking too much of Stacey's time to put the newsletter together. Stacey said it wasn't bad, but the time was going to come when she'd no longer go searching for individual club information on the facebook pages. Richard said we have facebook, we just need to maybe establish some rules — like no photos of carnage and no advertisements.

There was no unfinished or new business.

The next meeting will be October 12 in Bozeman at 10 am. at a location to be announced. A trail ride will follow.

Roger Osborne made a motion to adjourn at 12:52 pm., Michelle Ball seconded.

*Respectfully submitted
by Stacey Osborne,
M4x4A Secretary*

WEBSITE DIRECTORY

Montana 4x4 Association (M4x4A) — www.m4x4a.org
Divide Ride — www.montanadivideride.com
Blue Ribbon Coalition — www.sharetrails.org
Bureau of Land Management (BLM) — www.blm.gov/mt www.facebook.com/BLMMontana
Citizens for Balanced Use (CFBU) — www.balanceduse.org
Families for Outdoor Recreation (FFOR) — www.ffor.org
Leave No Trace — <http://lnt.org>
Montana Fish Wildlife & Parks — fwp.mt.gov
Montanas for Multiple Use — www.mtmultipleuse.org
Montana National Forests — www.fs.fed.us/recreation/map/state_list.shtml#Montana
Montana Off Road Extreme Racing (MORE) — www.montanaooffroadextreme.com
Montana Trail Vehicle Riders Association — www.mtvra.com
National Off-Highway Vehicle Conservation Council (NOHVCC) — www.nohvcc.org
Ravalli County Off Road User Association — <http://www.rcorua.org>
Recreational Trails Program — <http://stateparks.mt.gov/recreation/recTrailsProgram.html>
Trails in Trouble — www.trailsintrouble.org
Tread Lightly — treadlightly.org
Treasure State ATV Association — <http://www.tsatv.org>
Treasure State Resource Industry Association (formerly WETA) — www.tsria.org
United Four Wheel Drive Associations (UFWDA) — www.ufwda.org
Yellowstone Off Road Racing (YORR) — www.yorrracing.com

Montana 4x4 Association Clubs

Big Sky 4 Wheelers (Kalispell) — www.facebook.com/pages/Big-Sky-4-Wheelers/165148236890316/
Continental 4 Wheel Drive Association (Butte) — www.facebook.com/pages/Continental-4-Wheel-Drive-Association/114850405209799
Frontier 4-Wheelers (Helena) — www.facebook.com/Frontier4Wheelers
Magic City 4x4 (Billings) — www.mc4w.com
Magic City 4x4 (Billings) — www.facebook.com/groups/102015127323
Mountaineers (Bozeman) — <http://bozemanmountaineers.org>
Mountaineers (Bozeman) — www.facebook.com/Mountaineers
Rimrock 4x4 (Billings) — www.facebook.com/groups/252774264811991
Skyliner 4x4 Club (Polson) — www.skyliners4x4.com
Skyliner 4x4 Club (Polson) — <https://www.facebook.com/pages/Skyliners-4-Wheel-Drive-Club/127378030787187>

Other 4x4 Clubs

Beaverhead Backcountry Pioneers (Dillon) — <https://www.facebook.com/BeaverheadBackcountryPioneers>
Cascade County 4-Wheelers (Great Falls) — www.facebook.com/groups/180129495357107
Five Valley Off Roaders (Missoula) — www.facebook.com/fivevalleyoffroaders?group_id=0
Montana Back Roads 4x4 (Missoula) — www.montanabackroads.org
Montana Back Roads 4x4 (Missoula) — www.facebook.com/pages/Montana-Back-Roads-4x4-Club/170805969642153
Powell Valley 4-Wheelers — (Powell, WY) powellvalley4wheelers.com www.facebook.com/pv4wheelers?ref=ts&fref=ts